

20  
ANNIVERSARY

# Charleston

## SUMMER CLASSIC

July 11-15, 2012 \* July 17-21, 2012

USEF/USHJA AA Rated

\$25,000 Pony Hunter Derby/Classic

\$2,500 USHJA Hunter Derby each week

New "Derby Ring" has been added!



Classic  
Company<sup>INC.</sup>

Post Office Box 1311 Johns Island, South Carolina 29457  
843-768-5503 [www.classiccompany.com](http://www.classiccompany.com)





**Jacksonville Equestrian Center  
Jacksonville, Florida  
September 21-23, 2012**

## HIGHLIGHTS

- 2012 Maclay Regionals
- 2012 Zone 4 USEF Pessoa National Hunt Seat Medal Finals
- 2012 Zone 4 USEF Adult Medal Finals
- 2012 Southeast Medal Finals – Jr Medal 3'
- 2012 Southeast Medal Finals – Adult Medal 3'
- 2012 Zone 4 \$10,000 Children's Jumper Championship
- 2012 Zone 4 \$10,000 Adult Jumper Championships
- 2012 Age Group Zone 4 Champions (11 Under, 12-14, 15-17)
- 2012 2'6" Children's Hunters and Equitation
- 2012 2'6" Adults Hunter and Equitation
- 2012 USHJA Zone 4 Championship Class.
  - Children's Hunter – Adult Hunter – Children's Hunter Pony



FOR INFORMATION: **843-768-5503** [www.classiccompany.com](http://www.classiccompany.com)

Dear Exhibitors:

This will be our 20th Summer Classic this year and we are planning for lots of celebration.

**Boutique** (bōō-tēk') a. A horse show that is fashionable and unique. Always held at a wonderful venue with excellent accommodations for special horses, owners, and riders. Always involves parties, special classes and fun events. Always has excellent trophies and rewards Grand Champions. Always has mimosas on Sunday mornings.

The Charleston Summer Classic will be a special event this year. Our stalls will be limited to 450. There are 200 permanent stalls and two tent pads/tents that will each house 125 stalls. That's it. I would suggest calling as soon as possible for reservations.

There will be camper spots on the show grounds with electric and water. FYI - the beaches are approximately 6 miles from the show. I would suggest calling Equestrian Travel for your accommodations. They have both condos and hotels. For those looking for great luxury, the Sanctuary at Kiawah Island is a five star hotel on the beach.

There will be parties during the week and mimosas served ring side on Sunday.

See you at the ring.



Bob Bell  
President, Classic Company, Ltd.



P.O. Box 1311 ■ Johns Island, South Carolina 29457  
Phone: 843-768-5503 ■ Fax: 843-300-1018  
Email: [info@classiccompany.com](mailto:info@classiccompany.com)  
Internet: [www.classiccompany.com](http://www.classiccompany.com)

For rates and availability visit:

[www.equestriantravel.com](http://www.equestriantravel.com)

404-844-4404  
or 855-Go-Gallop



Photo by Flashpoint Photography

## Host Hotels

### **The Sanctuary**

**at Kiawah Island Golf Resort**

**Hotel rooms and 1 to 4 bedroom Villas**

Located along the pristine shores of Kiawah Island, South Carolina, this exquisitely designed oceanfront hotel, captures the spirit, history and charm of the beautiful south. Come walk through the front doors and experience a seaside mansion, where you will be surrounded by the grandeur of the architecture and hospitality at its finest.

### **Lands Inn**

**2545 Savannah Highway**

Newly renovated and one of the closest hotels to the show. Pets welcome with a pet fee.

### **Town & Country**

**2008 Savannah Highway**

Great hotel featuring a full service restaurant serving breakfast, lunch and dinner. Hotel offers an indoor and outdoor pool and on-site guest laundry. Pets welcome with a pet fee.

*Please call for Condo rates and availability!*



# Equestrian Travel

<b>Show Manager</b> .....	Bob Bell
<b>Technical Coordinator</b> .....	Allen Rheinheimer
<b>Show Secretaries</b> .....	Jonathan Rabon, Sue Tallon
<b>Announcer</b> .....	Jane Labyack
<b>Veterinarian</b> .....	Dr. Juan Gamboa (352-214-3778)
<b>Farrier</b> .....	Troy Van Heusen (803-572-1192)
<b>EMT</b> .....	Chickie Brown
<b>Photographer</b> .....	Flashpoint Photography (859-734-3713)
<b>Ribbons and Trophies</b> .....	Robin Stoney
<b>Stabling &amp; Camper Reservations</b> .....	Tissy Principe (843-768-5503)
<b>Sponsor Coordinator</b> .....	Becky Miles (770-962-0311)
<b>Public Relations</b> .....	Flashpoint Media (859-734-3713)
<b>Vendor Coordinator</b> .....	Terri Ammerman (803-669-3591)
<b>Accommodations</b> .....	Equestrian Travel (800-262-9974)
<b>Official Entry Partner</b> .....	Equestrian Connect
<b>Official Horse Transportation</b> .....	Johnson Horse Transportation (888-331-9961)
<b>Official Classic Company Artist</b> .....	Mary Verrandeaux

## **Charleston Summer Classic I** *USEF Competition #326151*

**July 11-15, 2012 (Wednesday - Sunday)**

<b>Hunter/Hunter EQ Judges</b> .....	Sandra Brown, Heidi Casciarro, Betsy Perry, Meg Skafgaard
<b>Jumper Judge</b> .....	Fred Brown
<b>Steward</b> .....	Janet McCarroll
<b>Course Designers</b> .....	Joe Carnicom (Hunters), Allen Rheinheimer (Jumpers)

## **Charleston Summer Classic II** *USEF Competition #326152*

**July 17-21, 2012 (Tuesday - Saturday)**

<b>Hunter/Hunter EQ Judges</b> .....	Tucker Ericson, Scott Fitton, William Sparks, Denise Perry
<b>Jumper Judge</b> .....	Fred Brown
<b>Steward</b> .....	Janet McCarroll
<b>Course Designers</b> .....	Joe Carnicom (Hunters), Allen Rheinheimer (Jumpers)

Airport: Official FBO-Atlantic-Charleston Executive Airport (JZI)

### **Recognized By**

USEF AA/USEF Jumper Level 2

Georgia Hunter Jumper Association ■ North Carolina Hunter Jumper Association  
South Carolina Hunter Jumper Association ■ North Florida Hunter Jumper Association  
West Tennessee Hunter Jumper Association

*These shows are produced by the Classic Company, Ltd., Johns Island, SC - Bob Bell, President*

# Tentative Time Schedule

## WEDNESDAY

Ring 1 8:00 am	Ring 2 8:00 am	Ring 3 4:00 pm	Ring 4 8:00 am
— Ticketed Warm-up 8:00 am - 3:30 pm	— Ticketed Warm-up 8:00 am - 3:30 pm	950 Pony Hunter Yearling 951 Pony Hunter 2 Year Old 952 Pony Hunter 3 Year Old Best Young Pony	

## THURSDAY

Ring 1 8:00 am	Ring 2 8:00 am	Ring 3 8:00 am	Ring 4 8:00 am
11 Gr Conf Model	195 Warm Up Htr		400 Training Jumper 1.0m
194 Warm Up Htr	143 Classic Htr 2'6"		401 Training Jumper 1.0m
1 1st Yr Gr	144 Classic Htr 2'6"		410 Child Ad Jpr 1.0m
2 1st Yr Gr	145 Classic Htr U/S		411 Child Ad Jpr 1.0m
5 1st Yr Gr U/S	146 Special Hunter 2'6"		412 Child Ad Jpr 1.10m
6 2nd Yr Gr	147 Special Hunter 2'6"		413 Child Ad Jpr 1.10m
7 2nd Yr Gr	148 Special Hunter 2'6" U/S		418 Child/Adult 1.15m
10 2nd Yr Gr U/S	149 Special Hunter 2'9"		419 Child/Adult 1.15m
12 Gr Conf	150 Special Hunter 2'9"		421 Jr AO 1.25m
13 Gr Conf	151 Special Hunter 2'9" U/S		422 Jr AO 1.25m
17 HP Regular	152 Special Hunter 3"		
18 HP Regular	153 Special Hunter 3"		
19 HP Reg Wkg U/S	154 Special Hunter 3" U/S		
20 Performance 3'6"			
21 Performance 3'6"			
22 Performance 3'6" U/S			
23 Performance 3'3"			
24 Performance 3'3"			
25 Performance 3'3" U/S			
129 Pr Gr Htr 3'-3'3"			
130 Pr Gr Htr 3'-3'3"			

## FRIDAY

Ring 1 8:00 am	Ring 2 8:00 am	Ring 3 8:00 am	Ring 4 8:00 am
196 Warm Up Htr	197 Warm Up Htr	190 Schooling Pony L/M/S	355 WIHS Jpr Phase
3 1st Yr Gr	140 Baby Green 2'6"	191 Schooling Pony L/M/S	353 USEF - USEF
4 1st Yr Gr	141 Baby Green 2'6"	188 Mod Child Adult	402 Training Jumper 1.0m
8 2nd Yr Gr	142 Baby Green U/S	189 Mod Child Adult	409 Child Ad Jpr 1.0m
9 2nd Yr Gr	155 Hopeful Htr 2'9"		414 Child Adult Jpr 1.10m
14 Gr Conf	156 Hopeful Htr 2'9"		420 Child Adult 1.15m
15 Gr Conf	157 Hopeful Htr U/S		423 Jr AO Hight 1.25m
16 Gr Conf U/S	192 Schooling Htr		
131 Pr Gr Htr 3'-3'3"	193 Schooling Htr		<b>Course Change</b>
132 Pr Gr Htr 3'-3'3"	173 TB Hunters		184 Mod Ad Htr
133 Pr Gr Htr U/S	174 TB Hunters		185 Mod Ad Htr
519 Pr Green Classic	175 TB Hunters U/S		186 Mod Children's Hunter
305 Eq 15-17 Flat	176 NTB Hunters		187 Mod Children's Hunter
304 Eq 15-17 O/F	177 NTB Hunters		303 12-14 Eq Flat
180 Mod Jr/AO 3'3" Htr	178 NTB Hunters		302 12-14 Eq O/F
181 Mod Jr/AO 3'3" Htr	356 WIHS Pony		359 SCHJA Medal
182 Mod AO 3' Htr	351 USEF Pony		
183 Mod AO 3' Htr			
900 USHJA Nat Htr Derby			

## SATURDAY

<b>Ring 1 7:30 am</b>	<b>Ring 2 8:00 am</b>	<b>Ring 3 8:00 am</b>	<b>Ring 4 8:00 am</b>
198 Non Pro Low	76 Lrg Pony Model	64 Sm Pony Model	363 SEM Adult Medal Qual
39 AO 3'3"	200 Non Pro Low	199 Non Pro Low	99 Ad Am 36 & Over
40 AO 3'3"	77 Lrg Pony Htr	65 Sm Pony	100 Ad Am 36 & Over
28 AO 18-35	78 Lrg Pony Htr	66 Sm Pony	508 Ad Am 36 & Over Classic
29 AO 18-35	505 Large Pony Classic	503 Sm Pony Classic	94 Ad Am 18-35
34 AO 36 & Over	88 Lrg Gr Model	70 Med Pony Model	95 Ad Am 18-35
35 AO 36 & Over	89 Lrg Gr Pony	71 Med Pony Htr	507 Ad Am 18-35 Classic
500 Amateur Classic	90 Lrg Gr Pony	72 Med Pony Htr	358 Ariat Medal
354 WIHS Hunter	82 Sm Gr Pony Model	504 Med Pony Classic	362 SEM Ch Medal Qual
59 Lrg Jr 16-17	83 Sm Gr Pony	199 Non Pro Low	109 Child Htr 14 & Under
60 Lrg Jr 16-17	84 Sm Gr Pony	168 Adult Hunter 2'6"	110 Child Htr 14 & Under
49 Lrg Jr 15 & Under	506 Green Pony Classic	169 Adult Hunter 2'6"	510 Child Htr 14 & Under
50 Lrg Jr 15 & Under	124 Child Htr Pony	517 Adult Hunter Classic 2'6"	Classic
502 Lrg Jr Hunter Classic	125 Child Htr Pony	163 Children's Hunter 2'6"	114 Child Htr 15-17
54 Sm Jr 16-17	513 Child Htr Pony Classic	164 Children's Hunter 2'6"	115 Child Htr 15-17
55 Sm Jr 16-17	301 Eq 11 & Under Flat	516 Children's Classic 2'6"	511 Child Htr 15-17 Classic
44 Sm Jr 15 & Under	300 Eq 11 & Under O/F		357 THIS Children's Medal
45 Sm Jr 15 & Under	158 OPP Sh/L Stir Htr		
501 Sm Jr Hunter Classic	159 OPP Sh/L Stir Htr		<i>**Pony Conformation Second O/F</i>
350 USEF Medal	514 OPP Sh/L Stir Classic		
134 Jr/Am 3'3"			
135 Jr/Am 3'3"			
515 Jr/Am 3'3" Classic			

## SUNDAY

<b>Ring 1 7:30 am</b>	<b>Ring 2 8:00 am</b>	<b>Ring 3 8:00 am</b>	<b>Ring 4 8:00 am</b>
43 AO 3'3" U/S	81 Lrg Pony Htr U/S	69 Sm Pony U/S	103 Ad Am 36 & Over U/S
41 AO 3'3"	79 Lrg Pony Htr	67 Sm Pony	101 Ad Am 36 & Over
42 AO 3'3"	80 Lrg Pony Htr	68 Sm Pony	102 Ad Am 36 & Over
32 AO 18-35 U/S	93 Lrg Gr Pony U/S	75 Med Pony Htr U/S	98 Ad Am 18-35 U/S
30 AO 18-35	91 Lrg Gr Pony	73 Med Pony	96 Ad Am 18-35
31 AO 18-35	92 Lrg Gr Pony	74 Med Pony	97 Ad Am 18-35
38 AO 36 & Over U/S	87 S/M Gr Pony U/S	172 Adult Hunter 2'6" U/S	113 Child Htr 14 & Under U/S
36 AO 36 & Over	85 S/M Gr Pony	170 Adult Hunter 2'6"	111 Child Htr 14 & Under
37 AO 36 & Over	86 S/M Gr Pony	171 Adult Hunter 2'6"	112 Child Htr 14 & Under
364 USEF Adult Medal	128 Child Htr Pony U/S	167 Children's Hunter 2'6"	118 Child Htr 15-17 U/S
352 ASPCA	126 Child Htr Pony	U/S	116 Child Htr 15-17
48 Sm Jr 15 & Under U/S	127 Child Htr Pony	165 Children's Hunter 2'6"	117 Child Htr 15-17
46 Sm Jr Htr 15 & Under	162 OPP Sh/L Stir Htr U/S	166 Children's Hunter 2'6"	
47 Sm Jr Htr 15 & Under	160 OPP Sh/L Stir Htr	160 Short Stirrup Hunter	
58 Sm Jr 16-17 U/S	161 OPP Sh/L Stir Htr	161 Short Stirrup Hunter	
56 Sm Jr Htr 16-17		514 Short Stirrup Hunter	
57 Sm Jr Htr 16-17		Classic	
53 Lrg Jr 15 & Under U/S			
51 Lrg Jr Htr 15 & Under			
52 Lrg Jr Htr 15 & Under			
63 Lrg Jr 16-17 U/S			
61 Lrg Jr Htr 16-17			
62 Lrg Jr Htr 16-17			
138 Jr/Am 3'3" U/S			
136 Jr/Am 3'3"			
137 Jr/Am 3'3"			

This time schedule is strictly tentative. Management reserves the right, without limitation, to alter or change scheduling, including arenas or order of events, in accordance with USEF rules, following receipt of entries. The final detailed schedule will be provided to all competitors whose entries are accepted.

# Tentative Time Schedule

## TUESDAY

Ring 1 8:00 am	Ring 2 8:00 am	Ring 3 8:00 am	Ring 4 8:00 am
— Ticketed Warm-up 8:00 am - 3:30 pm	— Ticketed Warm-up 8:00 am - 3:30 pm		400 Training Jumper 1.0m
			401 Training Jumper 1.0m
			410 Child Ad Jpr 1.0m
			411 Child Ad Jpr 1.0m
			412 Child Ad Jpr 1.10m
			413 Child Ad Jpr 1.10m
			418 Child/Adult 1.15m
			419 Child/Adult 1.15m
			421 Jr AO 1.25m
			422 Jr AO 1.25m

## WEDNESDAY

Ring 1 8:00 am	Ring 2 8:00 am	Ring 3 8:00 am	Ring 4 8:00 am
11 Gr Conf Model	195 Warm Up Htr	190 Schooling Pony L/M/S	355 WIHS Jpr Phase
194 Warm Up Htr	143 Classic Htr 2'6"	191 Schooling Pony L/M/S	353 USEF - USEF
1 1st Yr Gr	144 Classic Htr 2'6"		402 Training Jumper 1.0m
2 1st Yr Gr	145 Classic Htr U/S		409 Child Ad Jpr 1.0m
5 1st Yr Gr U/S	146 Special Hunter 2'6"		414 Child Adult Jpr 1.10m
6 2nd Yr Gr	147 Special Hunter 2'6"		420 Child Adult 1.15m
7 2nd Yr Gr	148 Special Hunter 2'6" U/S		423 Jr AO Height 1.25m
10 2nd Yr Gr U/S	149 Special Hunter 2'9"		
12 Gr Conf	150 Special Hunter 2'9"		<b>Course Change</b>
13 Gr Conf	151 Special Hunter 2'9" U/S		356 WIHS Pony
17 HP Regular	152 Special Hunter 3"		
18 HP Regular	153 Special Hunter 3"		
19 HP Reg Wkg U/S	154 Special Hunter 3" U/S		
20 Performance 3'6"	351 USEF Pony		
21 Performance 3'6"			
22 Performance 3'6" U/S			
23 Performance 3'3"			
24 Performance 3'3"			
25 Performance 3'3" U/S			
129 Pr Gr Htr 3'-3'3"			
130 Pr Gr Htr 3'-3'3"			

## THURSDAY

Ring 1 8:00 am	Ring 2 8:00 am	Ring 3 8:00 am	Ring 4 8:00 am
196 Warm Up Htr	76 Lrg Pony Model	64 Sm Pony Model	197 Warm Up Htr
3 1st Yr Gr	200 Non Pro Low	199 Non Pro Low	140 Baby Green 2'6"
4 1st Yr Gr	77 Lrg Pony Htr	65 Sm Pony	141 Baby Green 2'6"
8 2nd Yr Gr	78 Lrg Pony Htr	66 Sm Pony	142 Baby Green U/S
9 2nd Yr Gr	88 Lrg Gr Model	70 Med Pony Model	155 Hopeful Htr 2'9"
14 Gr Conf	89 Lrg Gr Pony	71 Med Pony Htr	156 Hopeful Htr 2'9"
15 Gr Conf	90 Lrg Gr Pony	72 Med Pony Htr	157 Hopeful Htr U/S
16 Gr Conf U/S	82 Sm Gr Pony Model	124 Child Htr Pony	192 Schooling Htr
131 Pr Gr Htr 3'-3'3"	83 Sm Gr Pony	125 Child Htr Pony	193 Schooling Htr
132 Pr Gr Htr 3'-3'3"	84 Sm Gr Pony	301 Eq 11 & Under Flat	173 TB Hunters
133 Pr Gr Htr U/S	158 OPP Sh/L Stir Htr	300 Eq 11 & Under O/F	174 TB Hunters
519 Pr Green Classic	159 OPP Sh/L Stir Htr		175 TB Hunters U/S
305 Eq 15-17 Flat			176 NTB Hunters
304 Eq 15-17 O/F			177 NTB Hunters
180 Mod Jr/AO 3'3" Htr			178 NTB Hunters
181 Mod Jr/AO 3'3" Htr			184 Mod Ad Htr
182 Mod AO 3' Htr			185 Mod Ad Htr
183 Mod AO 3' Htr			186 Mod Children's Hunter
188 Mod Jr Ao Htr			187 Mod Children's Hunter
189 Mod Jr Ao Htr			303 12-14 Eq Flat
			302 12-14 Eq O/F
900 USHJA Nat Htr Derby			359 SCHJA Medal

**FRIDAY**

Ring 1 7:30 am	Ring 2 8:00 am	Ring 3 8:00 am	Ring 4 8:00 am
198 Non Pro Low	81 Lrg Pony Htr U/S	69 Sm Pony U/S	363 SEM Adult Medal Qual
39 AO 3'3"	79 Lrg Pony Htr	67 Sm Pony	99 Ad Am 36 & Over
40 AO 3'3"	80 Lrg Pony Htr	68 Sm Pony	100 Ad Am 36 & Over
28 AO 18-35	93 Lrg Gr Pony U/S	75 Med Pony Htr U/S	508 Ad Am 36 & Over Classic
29 AO 18-35	91 Lrg Gr Pony	73 Med Pony	94 Ad Am 18-35
34 AO 36 & Over	92 Lrg Gr Pony	74 Med Pony	95 Ad Am 18-35
35 AO 36 & Over	87 S/M Gr Pony U/S	128 Child Htr Pony U/S	507 Ad Am 18-35 Classic
500 Amateur Classic	85 S/M Gr Pony	126 Child Htr Pony	358 Ariat Medal
354 WIHS Hunter	86 S/M Gr Pony	127 Child Htr Pony	362 SEM Ch Medal Qual
59 Lrg Jr 16-17	506 Green Pony Classic	513 Child Htr Pony Classic	109 Child Htr 14 & Under
60 Lrg Jr 16-17	162 OPP Sh/L Stir Htr U/S		110 Child Htr 14 & Under
49 Lrg Jr 15 & Under	160 OPP Sh/L Stir Htr		510 Child Htr 14 & Under Classic
50 Lrg Jr 15 & Under	161 OPP Sh/L Stir Htr		114 Child Htr 15-17
502 Lrg Jr Hunter Classic	514 OPP Sh/L Stir Classic		115 Child Htr 15-17
54 Sm Jr 16-17			511 Child Htr 15-17 Classic
55 Sm Jr 16-17			357 THIS Children's Medal
44 Sm Jr 15 & Under			199 Non Pro Low
45 Sm Jr 15 & Under			168 Adult Hunter 2'6"
501 Sm Jr Hunter Classic			169 Adult Hunter 2'6"
350 USEF Medal			517 Adult Hunter Classic 2'6"
134 Jr/Am 3'3"			163 Children's Hunter 2'6"
135 Jr/Am 3'3"			164 Children's Hunter 2'6"
515 Jr/Am 3'3" Classic			516 Children's Classic 2'6"

**SATURDAY**

Ring 1 7:30 am	Ring 2 8:00 am	Ring 3 8:00 am	Ring 4 8:00 am
43 AO 3'3" U/S	901 \$25,000 Pony Classic	103 Ad Am 36 & Over U/S	
41 AO 3'3"		101 Ad Am 36 & Over	
42 AO 3'3"		102 Ad Am 36 & Over	
32 AO 18-35 U/S		98 Ad Am 18-35 U/S	
30 AO 18-35		96 Ad Am 18-35	
31 AO 18-35		97 Ad Am 18-35	
38 AO 36 & O ver U/S		113 Child Htr 14 & Under U/S	
36 AO 36 & Over		111 Child Htr 14 & Under	
37 AO 36 & Over		112 Child Htr 14 & Under	
364 USEF Adult Medal		118 Child Htr 15-17 U/S	
352 ASPCA		116 Child Htr 15-17	
48 Sm Jr 15 & Under U/S		117 Child Htr 15-17	
46 Sm Jr Htr 15 & Under		172 Adult Hunter 2'6" U/S	
47 Sm Jr Htr 15 & Under		170 Adult Hunter 2'6"	
58 Sm Jr 16-17 U/S		171 Adult Hunter 2'6"	
56 Sm Jr Htr 16-17		167 Children's Hunter 2'6" U/S	
57 Sm Jr Htr 16-17		165 Children's Hunter 2'6"	
53 Lrg Jr 15 & Under U/S		166 Children's Hunter 2'6"	
51 Lrg Jr Htr 15 & Under		160 Short Stirrup Hunter	
52 Lrg Jr Htr 15 & Under		161 Short Stirrup Hunter	
63 Lrg Jr 16-17 U/S		514 Short Stirrup Hunter Classic	
61 Lrg Jr Htr 16-17			
62 Lrg Jr Htr 16-17			
138 Jr/Am 3'3" U/S			
136 Jr/Am 3'3"			
137 Jr/Am 3'3"			

*This time schedule is strictly tentative. Management reserves the right, without limitation, to alter or change scheduling, including arenas or order of events, in accordance with USEF rules, following receipt of entries. The final detailed schedule will be provided to all competitors whose entries are accepted.*

# The Classic Company *Year End Awards*

sponsored by



## *The Divisions:*

Pre-Green Hunter	Children's Hunter 15-17
Green Working Hunter	Small Pony Hunter
Green Conformation Hunter	Medium Pony Hunter
High Performance Regular Working Hunter	Large Pony Hunter
Performance Hunter 3'6"	Small/Medium Green Pony Hunter
Performance Hunter 3'3"	Large Green Pony Hunter
AO Hunter 18-35	Children's Hunter Pony Hunter
AO Hunter 36 & Over	Short Stirrup Hunter
Small Junior Hunter	Pre-Children's Hunter
Large Junior Hunter	Pre-Adult Hunter
Adult Amateur Hunter 18-35	Children's Jumper
Adult Amateur Hunter 36-45	Adult Jumper
Adult Amateur Hunter 46 & Over	Junior/AO Low Jumper
Children's Hunter 14 & Under	Junior/AO High Jumper

## *The Horse Shows to be included:*

- Atlanta Spring Classic I & II
- Atlanta Summer Classic I & II
- Charleston Summer Classic I & II
- Atlanta Fall Classic I & II

***Points:*** 10, 6, 4, 2, 1, 1/2 Model Points not to count. No bonus for Champion or Reserve Champion. Points will be posted on the internet, [www.classiccompany.com](http://www.classiccompany.com), at the conclusion of each event.

***Awards:*** Silver Trophy, Ribbon and recognition in the Chronicle of the Horse.



Classic  
Company, LLC

843-768-5503

[www.classiccompany.com](http://www.classiccompany.com)

# *Grand Champion Awards*

## **Grand Hunter Champion: *The James Vaughn Perpetual Trophy***

Awarded to the Hunter with the most championship points in the Green or Regular Conformation, Amateur or Junior Hunter Divisions. Model points not to count.

*Donated by Robbie Hunt and the Classic Company, Ltd.*

## **Grand Amateur Hunter Champion: *The Seabrook Perpetual Trophy***

Awarded to the Amateur Hunter Champion with the most championship points in the Amateur Divisions. *Donated by Mr. and Mrs. John Horton of Seabrook Island*

## **Grand Junior Hunter Champion: *The Hummel Perpetual Trophy***

Awarded to the Junior Hunter with the most championship points in the Junior Hunter Divisions. *Donated by Oak River Farm and the Principe family*

## **Grand Large Junior Hunter Champion: *The Rave Perpetual Trophy***

Awarded to the Large Junior Hunter with the most championship points in the Large Junior Hunter Divisions. *Donated by the Ueltzen Family*

## **Grand Small Junior Hunter Champion: *Sweet Surprise Perpetual Trophy***

Awarded to the Small Junior Hunter with the most championship points in the Small Junior Hunter Divisions. *Donated by Brad Spragg and Atlanta Hunt Club*

## **Grand Pony Champion: *The Keith R. Nichols Memorial Perpetual Trophy***

Awarded to the Pony with the most championship points in the Small, Medium, Large or Green Pony Divisions. *Donated by Robin R. Stoney and Mary Allison Mullis*

## **Grand Children's Hunter Champion: *The Trick or Treat Memorial Trophy***

Awarded to the Children's Hunter with the most championship points in the Children's Hunter Divisions. *Donated by Danny Robertshaw*

## **Grand Adult Amateur Hunter Champion: *The Hillbright Farm Trophy***

Awarded to the Adult Amateur Hunter with the most championship points in the Adult Amateur Hunter Divisions. *Donated by Hill Bright Farm*

## **Grand High Performance Regular Working Hunter Champion:**

### ***The Marie Reynolds Memorial Perpetual Trophy***

Awarded to the Regular Working Hunter with the most championship points in the Regular Working Hunter Divisions. *Donated by Bob Bell*

## **Grand Green Conformation Hunter Champion:**

### ***The Arc De Triomphe Perpetual Trophy***

Awarded to the Green Conformation Hunter with the most championship points in the Green Conformation Hunter Divisions. *Donated by Bob Bell and the Homestead Horse Show*

## **Grand Green Working Hunter Champion: *The Sit-Down Perpetual Trophy***

Awarded to the Green Working Hunter Champion with the most championship points in the first or second year Green Working Hunter Divisions.

*Donated by Peter Pletcher and PJP Farms*

## **Grand Pre-Green Champion: *The Beverly Finkle Memorial Trophy***

Awarded to the Pre-Green Horse with the most championship points in the Pre-Green Divisions. *Donated by Robin Degnan*



## Specifications for all Hunter Classes

**Hunter Over Fences:** To be shown over approximately eight fences at the required height. To be judged on performance and soundness unless otherwise noted.

**Hunter Under Saddle:** To be shown at a walk, trot and canter. Light contact with the horse's mouth is required. May be asked to hand gallop at the discretion of the judge but no more than eight to gallop at one time. Martingales not permitted. Green and unrated hunter sections will not be asked to gallop.

**Model Classes:** To be shown at a walk and trot on the line; to be judged on conformation, way of moving and soundness.

**Hunter Champion and Reserve Champion:** To be awarded to two of the four horses scoring the most points over fences, in addition, only these horses will receive full points for ribbons won under saddle and half points for ribbons won in the model.

**Courses:** Hunter courses will simulate fences found in the hunting field such as brush, wall, in-and-out, oxer, post and rails, gate, aiken, bank, coop, and panels. Management reserves the right to adjust fence heights or spreads as competition warrants.

All Hunter divisions will be held in accordance with USEF Rules and Zone 4 specifications.

## USEF AA Rated Hunter Sections

### First Year Green Working Hunter

**Section Entry Fee:** \$250 **Fences:** 3'6"  
**Prize Money:** \$120, \$88, \$60, \$40, \$32, \$20, \$20, \$20  
**Class Numbers:** 1, 2, 3, 4, 5

### Second Year Green Working Hunter

**Section Entry Fee:** \$230 **Fences:** 3'6"  
**Prize Money:** \$90, \$66, \$45, \$30, \$24, \$15, \$15, \$15  
**Class Numbers:** 6, 7, 8, 9, 10

### Green Conformation Hunter

**Section Entry Fee:** \$230 **Model Class:** \$20  
**Fences:** 3'6" & 3'9" **Prize Money:** \$90, \$66, \$45, \$30, \$24, \$15, \$15, \$15  
**Class Numbers:** 11, 12, 13, 14, 15, 16

### High Performance Regular Working Hunter

**Section Entry Fee:** \$150 **Fences:** 4'  
**Prize Money:** \$95, \$66, \$45, \$30, \$24, \$15, \$15, \$15  
**Class Numbers:** 17, 18, 19

### Performance Hunter 3'6"

**Section Entry Fee:** \$150 **Fences:** 3'6"  
**Prize Money:** \$90, \$65, \$45, \$30, \$25, \$10  
**Class Numbers:** 20, 21, 22

### Performance Hunter 3'3"

**Section Entry Fee:** \$150 **Fences:** 3'3"  
**Prize Money:** \$90, \$65, \$45, \$30, \$25, \$5  
**Class Numbers:** 23, 24, 25

### Amateur Owner Hunter (18-35)

**Section Entry Fee:** \$250 **Fences:** 3'6"  
**Prize Money:** \$120, \$88, \$60, \$40, \$32, \$20, \$20, \$20  
**Class Numbers:** 28, 29, 30, 31, 32

### Amateur Owner Hunter (36 & Over)

**Section Entry Fee:** \$250 **Fences:** 3'6"  
**Prize Money:** \$120, \$88, \$60, \$40, \$32, \$20, \$20, \$20  
**Class Numbers:** 34, 35, 36, 37, 38

### Amateur Owner Hunter 3'3"

**Section Entry Fee:** \$250 **Fences:** 3'3"  
**Prize Money:** \$120, \$88, \$60, \$40, \$32, \$20, \$20, \$20  
**Class Numbers:** 39, 40, 41, 42, 43

### Small Junior Hunter (15 & Under)

**Section Entry Fee:** \$230 **Fences:** 3'6"  
**Prize Money:** \$90, \$66, \$45, \$30, \$24, \$15, \$15, \$15  
**Class Numbers:** 44, 45, 46, 47, 48

### Large Junior Hunter (15 & Under)

**Section Entry Fee:** \$230 **Fences:** 3'6"  
**Prize Money:** \$90, \$66, \$45, \$30, \$24, \$15, \$15, \$15  
**Class Numbers:** 49, 50, 51, 52, 53

### Small Junior Hunter (16 & 17)

**Section Entry Fee:** \$230 **Fences:** 3'6"  
**Prize Money:** \$90, \$66, \$45, \$30, \$24, \$15, \$15, \$15  
**Class Numbers:** 54, 55, 56, 57, 58

**Bold** indicates model classes.

Underline indicates handy hunter or conformation class.

Last class listed in each section is the under saddle class.

\*Prize money listed is prize amount per class.

# Pony Mania

at the  
Charleston Summer  
Classic in July!



## The Supreme Kahuna Pony Classic (Week I)

To be scored using the numerical judging system.

Competitors accumulating points will be posted at the Horse Show Office at the end of each day. These points will then move forward to the Pony Hunter Classic for each pony division to aid in determining the ultimate winners. Overall scores will add up as follows: points from the Pony Model classes will count as 25%, points from the Pony Under Saddle classes another 25%. These two scores will be added to the two Classic rounds, which will count as the remaining 50%, to decide the final total scores.

There will be a Supreme Grand Kahuna Pony awarded in each size of each division: Small, Medium, and Large Pony as well as Small, Medium, and Large Green Pony.

All six champions will receive the following:

- Gift Certificate for an Essex Classics Shirt

**2007 Champion:** Hi-Lite ridden by Lucille Oken

**2008 Champion:** Cozy Up ridden by Nicole White

**2009 Champion:** Cherrybrook Skye Blue ridden by Paige Parker

**2010 Champion:** Champlain Celebration ridden by Nicole White

**2011 Champion:** Champlain Sovereign ridden by Paige Parker

A Most Supreme Grand Kahuna Pony Rider Champion will also be awarded based upon the total points gathered from the Small, Medium, and Large Pony Grand Supreme Champion divisions. This champion will receive a special cooler and be featured in a full-page congratulatory ad provided by Flashpoint Photography to appear in the *Chronicle of the Horse*.

# Hunter Division

## Large Junior Hunter (16 & 17)

**Section Entry Fee:** \$230 **Fences:** 3'6"  
**Prize Money:** \$90, \$66, \$45, \$30, \$24, \$15, \$15, \$15  
**Class Numbers:** 59, 60, 61, 62, 63

## Small Pony Hunter

**Section Entry Fee:** \$230 **Model Class:** \$20  
**Fences:** 2'3" **Prize Money:** \$90, \$66, \$45, \$30, \$24, \$15, \$15, \$15  
**Class Numbers:** 64, 65, 66, 67, 68, 69

## Medium Pony Hunter

**Section Entry Fee:** \$230 **Model Class:** \$20  
**Fences:** 2'6" **Prize Money:** \$90, \$66, \$45, \$30, \$24, \$15, \$15, \$15  
**Class Numbers:** 70, 71, 72, 73, 74, 75

## Large Pony Hunter

**Section Entry Fee:** \$230 **Model Class:** \$20  
**Fences:** 3' **Prize Money:** \$90, \$66, \$45, \$30, \$24, \$15, \$15, \$15  
**Class Numbers:** 76, 77, 78, 79, 80, 81

## Small/Medium Green Pony Hunter

**Section Entry Fee:** \$200 **Model Class:** \$20  
**Fences:** 2'3" & 2'6" **Prize Money:** \$60, \$44, \$30, \$20, \$16, \$10, \$10, \$10  
**Class Numbers:** 82, 83, 84, 85, 86, 87

*Will split Small and Medium Green Ponies if there are 3 in each section.*

## Large Green Pony Hunter

**Section Entry Fee:** \$200 **Model Class:** \$20  
**Fences:** 2'9" **Prize Money:** \$60, \$44, \$30, \$20, \$16, \$10, \$10, \$10  
**Class Numbers:** 88, 89, 90, 91, 92, 93

## USEF C Rated Hunter Sections

### Adult Amateur Hunter (18-35)

(see Zone 4 specifications)  
**Section Entry Fee:** \$190 or \$45 per class  
**Fences:** 3'  
**Prize Money:** \$40, \$22, \$15, \$10, \$8, \$5  
**Class Numbers:** 94, 95, 96, 97, 98

### Adult Amateur Hunter (36 & Over)

(see Zone 4 specifications)  
**Section Entry Fee:** \$190 or \$45 per class  
**Fences:** 3'  
**Prize Money:** \$40, \$22, \$15, \$10, \$8, \$5  
**Class Numbers:** 99, 100, 101, 102, 103

### Children's Hunter (14 & Under)

(see Zone 4 specifications)  
**Section Entry Fee:** \$190 or \$45 per class  
**Fences:** 3'  
**Prize Money:** \$30, \$22, \$15, \$10, \$8, \$5, \$5, \$5  
**Class Numbers:** 109, 110, 111, 112, 113

*Older Adult Amateur classes will be split with 6 in each group.*

### Children's Hunter (15-17)

(see Zone 4 specifications)  
**Section Entry Fee:** \$190 or \$45 per class  
**Fences:** 3'  
**Prize Money:** \$30, \$22, \$15, \$10, \$8, \$5, \$5, \$5  
**Class Numbers:** 114, 115, 116, 117, 118

### Children's Hunter Pony

(see Zone 4 specifications)  
**Section Entry Fee:** \$140 or \$45 per class  
**Fences:** 2' & 2'6"  
**Class Numbers:** 124, 125, 126, 127, 128

### Pre-Green Hunter 3' & 3'3"

*sponsored by The Exchange*  
(see Zone 4 specifications)  
**Section Entry Fee:** \$190 or \$45 per class  
**Fences:** 3' & 3'3"  
**Prize Money:** \$40, \$22, \$15, \$10, \$8, \$5  
**Class Numbers:** 129, 130, 131, 132, 133

**Bold** indicates model classes.

Underline indicates handy hunter or conformation class.

Last class listed in each section is the under saddle class.

\*Prize money listed is prize amount per class.

# Hunter Division

## Unrated Hunter Sections

### Junior and Amateur Hunter 3'3"

Open to all Junior and Amateur riders. Horse rider combination may not cross enter into any classes 3'6" or higher.

**Section Entry Fee:** \$135 **Fences:** 2'9"

**Class Numbers:** 134,135,136,137,138

### Baby Green Hunter

Open to all horses and ponies that have not shown over fences exceeding 3'3".

**Section Entry Fee:** \$75 or \$40 per class

**Fences:** 2'6"

**Class Numbers:** 140, 141, 142

### Classic Hunter

Open to all horses and ponies.

**Section Entry Fee:** \$75 or \$40 per class

**Fences:** 2'6"

**Class Numbers:** 143, 144, 145

### Special Hunter 2'6"

Open to all horses and ponies.

**Section Entry Fee:** \$75 or \$40 per class

**Fences:** 2'6"

**Class Numbers:** 146, 147, 148

### Special Hunter 2'9"

Open to all horses and ponies.

**Section Entry Fee:** \$75 or \$40 per class

**Fences:** 2'9"

**Class Numbers:** 149, 150, 151

### Special Hunter 3'

Open to all horses and ponies.

**Section Entry Fee:** \$75 or \$40 per class

**Fences:** 3'

**Class Numbers:** 152, 153, 154

### Hopeful Hunter

Open to all horses and ponies in their first year of showing.

**Section Entry Fee:** \$75 or \$40 per class

**Fences:** 2'6"

**Class Numbers:** 155, 156, 157

### Opp Short/Long Stirrup Hunter\*

Open to all Junior riders 12 years of age and under. Riders **may not** cross enter into any USEF recognized divisions or unrecognized classes with fence heights higher than 2'6". Opportunity Classes do not require the rider to be a member of USHJA/USEF or pay a drug fee.

**Section Entry Fee:** \$135 or \$35 per class

**Fences:** 2'

**Class Numbers:** 158, 159, 160, 161, 162

### Children's Hunter

Open to Junior riders. Horse/rider combination **may not** cross enter into any rated division or division with fence heights 3' or higher.

**Section Entry Fee:** \$135 or \$35 per class

**Fences:** 2'6"

**Class Numbers:** 163, 164, 165, 166, 167

### Adult Hunter

Open to Adult Amateur riders. Horse/rider combination **may not** cross enter into any rated division or division with fence heights 3' or higher.

**Section Entry Fee:** \$135 or \$35 per class

**Fences:** 2'6"

**Class Numbers:** 168, 169, 170, 171, 172

### Thoroughbred Hunter

Open to all Thoroughbred Hunters.

**Entry Fee:** \$75 or \$40 per class

**Fences:** 3', 3'3", 3'6"

**Class Numbers:** 173, 174, 175

### Non-Thoroughbred Hunter

Open to all Non-Thoroughbred Hunters.

**Entry Fee:** \$75 or \$40 per class

**Fences:** 3', 3'3", 3'6"

**Class Numbers:** 176, 177, 178

*\*Please reference page 22 for Opportunity specifications.*



*Reinsel Family and Friends with their horses riding on the beach in 2009.*

## Blue Ribbon/Red Ribbon Hunter Sections

Horses and ponies will be judged and given a numeric score. Scores of 77-100 will earn a blue ribbon. Scores of 70-76 will earn a red ribbon. \***Mystery Man Classes: 181, 183, 185, 187, 189**  
Each exhibitor will show over 8 fences and before exiting the ring will tell the judge which jump to eliminate. Best seven out of eight. The winner of each section will receive a silver bowl.

### Modified Junior/Amateur Hunter

Open to all Junior and Amateur riders.

**Entry Fee:** \$35 per class **Fences:** 3'3"

**Class Numbers:** 180, 181\*

### Modified AO Hunter

Open to all Junior riders.

**Entry Fee:** \$35 per class **Fences:** 3'

**Class Numbers:** 182, 183\*

### Modified Adult Hunter

Open to all Adult riders.

**Entry Fee:** \$35 per class **Fences:** 2'9"

**Class Numbers:** 184, 185\*

### Modified Children's Hunter

Open to all Children riders.

**Entry Fee:** \$35 per class **Fences:** 2'9"

**Class Numbers:** 186, 187\*

### Modified Junior/Amateur Hunter

Open to all Junior and Amateur riders.

**Entry Fee:** \$35 per class **Fences:** 3'

**Class Numbers:** 188, 189\*

### Schooling Pony Hunter

Open to all ponies.

**Entry Fee:** \$35 per class **Fences:** 2'3", 2'6", 2'9"

**Class Numbers:** 190, 191

### Schooling Hunter

Open to all horses.

**Entry Fee:** \$35 per class **Fences:** 3' and 3'3"

**Class Numbers:** 192, 193

### Warm-Up Hunter

Open to all horses and ponies. Fences will move with division heights.

**Entry Fee:** \$35 per class

**Class Numbers:** 194, 195, 196, 197

### Non-Pro Low

Open to all horses and ponies. Fences will move with division height.

**Entry Fee:** \$35 per class

**Class Numbers:** 198, 199, 200, 201

### Pony Hunter Breeding (Week 1 Only)

**Entry Fee:** \$35 per class

**Class Numbers:** 950 Pony Yearling,  
951 Pony 2 Year Old, 952 Pony 3 Year Old,  
Best Young Horse

## Entries made easy with **EQUESTRIAN CONNECT™** the one-minute horse show entry service

Whether you are an amateur or professional, large barn or small, you will complete your entries in minutes.

*"As a professional, I have several objectives: ride to win, deliver value to my customers, and run an efficient business. Equestrian Connect saves us time and money on entries, helping accomplish all three objectives."*

**Jimmy Torano**

Jet Show Stables - Florida and Pennsylvania

To register now or see a demo, go to: [equestrianconnect.com](http://equestrianconnect.com)  
Equestrian Connect is FREE for an introductory 45 days.

**EQUESTRIAN™**  
**CONNECT**

## Equitation Classes

### 11 & Under EQ Over Fences

Entry Fee: \$35 Fences: 2'3"

Class Number: 300

### 11 & Under EQ Flat

Entry Fee: \$35

Class Number: 301

### 12-14 EQ Over Fences

Entry Fee: \$35 Fences: 2'9"

Class Number: 302

### 12-14 EQ Flat

Entry Fee: \$35

Class Number: 303

### 15-17 EQ Over Fences

Entry Fee: \$35 Fences: 3'6"

Class Number: 304

### 15-17 EQ Flat

Entry Fee: \$35 Fences: 2'3"

Class Number: 305

The Age Group Equitation Finals will be held at the **Tryon Fall Classic**. Please inquire in the horse show office for additional information.

## Equitation Medal Classes

### USEF Pessoa Medal

Entry Fee: \$45 Fences: 3'6"

Class Number: 350

### Equisport/USEF Pony Medal

Entry Fee: \$45 per class Fences: 2'3", 2'6", 3'

Class Number: 351

### ASPCA

Entry Fee: \$45 Fences: 3'6"

Class Number: 352

### Platinum Performance/USEF Show Jumping Talent Search

Entry Fee: \$45 Fences: 3'9"

Class Number: 353

### WIHS Hunter

Entry Fee: \$45 Fences: 3'6"

Class Number: 354

### WIHS Jumper

Entry Fee: \$45 Fences: 3'6"

Class Number: 355

### WIHS Pony

Entry Fee: \$45 Fences: 2'3", 2'6", 3'

Class Number: 356

### Taylor Harris Insurance Services National Children's Medal

Entry Fee: \$45 Fences: 3'

Class Number: 357

### Ariat Adult Medal

Entry Fee: \$45 Fences: 3'

Class Number: 358

### SCHJA Medal

Entry Fee: \$45 Fences: 3'

Class Number: 359

### Southeast Medal Junior 3'

Entry Fee: \$45 Fences: 3'

Class Number: 362

### Southeast Medal Amateur 3'

Entry Fee: \$45 Fences: 3'

Class Number: 363

### USEF Adult Medal

Entry Fee: \$45 Fences: 3'3"

Class Number: 364

## Best Child Rider (Week II)

### Best Child Rider (Small Pony)

Entry Fee: \$25

Class Number: 370

### Best Child Rider (Medium Pony)

Entry Fee: \$25

Class Number: 371

### Best Child Rider (Large Pony)

Entry Fee: \$25

Class Number: 372

## Specifications for all Jumper Classes

**Declarations:** Declarations must be made on the appropriate form in the Horse Show Office the day before the class is to be held and by 5:00 p.m. or one hour after the last jumper class, whichever is later. Untimely declarations will be required to jump first in the order.

**Courses:** Courses may consist of any combination of the following: brush; gates; oxers; post and rails; water; liverpool; ditch; wall; banks; panels; or coops.

**Ties:** All ties involving first place shall be jumped off. Ties not involving first place will be decided by time taken in the first round.

**Order of Go:** Order of Go will be posted at the in-gate of the Jumper Ring at least one hour prior to the class. Jump order will be drawn for all classes. All Jumper Divisions will be held in accordance with USEF Rules and Zone 4 Specifications.

### Jumper Section

Open to all horses and ponies. Horse/rider combination may not cross enter into Junior/Amateur Owner Jumper sections or other jumper classes with fence heights starting 3'9" or higher.

#### Training Jumper Meter 1.0

**Entry Fee:** \$40 per class

**Class Numbers:** 400, 401, 402

#### Children's/Adult Jumper Meter 1.0

No nomination fee required.

**Entry Fee:** \$40 per class

**Class Numbers:** 409, 410, 411

#### Children's/Adult Jumper Meter 1.10

(see Zone 4 specifications)

**Entry Fee:** \$40 per class

**Class Numbers:** 412, 413, 414

#### Children's/Adult Jumper Meter 1.15

(see Zone 4 specifications)

**Entry Fee:** \$40 per class

**Class Numbers:** 418, 419, 420

*If there are less than 10 entries in the Level 3 Child and Adult Jumper divisions the sections will be combined.*

#### Junior/Amateur Owner Jumper sponsored by EMO Agency, Inc.

#### Junior/Amateur Jumper Meter 1.25

**Entry Fee:** \$50 per class

**Nomination Fee:** \$75 for the Division

**Prize Money:** \$150, \$100, \$75, \$65, \$60, \$50

**Class Numbers:** 421, 422, 423

## Showcase Ltd

3452 Arbor Hill Road Canton, GA 30115 [www.showcaseltd.com](http://www.showcaseltd.com)



Located near Alpharetta, Showcase Ltd provides the finest care, instruction, and training available for all riders from Short Stirrup, Equitation, Jr. Hunters, Adults, and Amateurs through to the Grand Prix jumper ring. Terry Brown is unequalled in the Southeast for her ability with riders and horses. When you decide that you deserve to have FUN and ENJOY the best facility with the finest care, good instruction and unparalleled training, call 770-479-5696.

## Hunter Classics

**Class Conditions for 500-519:** To be judged on performance and soundness with manners emphasized. To be scored under the open numerical judging system. The last over fence class of the division will count as the first round of the Classic. The horses will return in order, lowest to highest for round 2. In the event of ties, order of those tied will be drawn. Scores will be averaged from both rounds to determine the winners. In case of a tie for first place only, the tied horses will jump a third round over a shortened course to break the tie. In all other ties, the prize money will be added and divided equally and riders will toss a coin for the ribbons.

### **\$1,000 Amateur Owner Hunter Classic**

**Entry Fee:** \$60 **Fences:** 3'3" & 3'6"  
**Prize Money:** \$250, \$190, \$150, \$100, \$90, \$80, \$70, \$70  
**Class Number:** 500

### **\$1,000 Small Junior Hunter Classic**

**Entry Fee:** \$60 **Fences:** 3'6"  
**Prize Money:** \$250, \$190, \$150, \$100, \$90, \$80, \$70, \$70  
**Class Number:** 501

### **\$1,000 Large Junior Hunter Classic**

**Entry Fee:** \$60 **Fences:** 3'6"  
**Prize Money:** \$250, \$190, \$150, \$100, \$90, \$80, \$70, \$70  
**Class Number:** 502

*If there are less than six entries in the Small Junior Hunter Classic and/or the Large Junior Hunter Classic then the classics will be combined and run as a \$1,000 Junior Hunter Classic.*

### **\$500 Small Pony Hunter Classic (Week 1)**

**Entry Fee:** \$50 **Fences:** 2'3"  
**Prize Money:** \$125, \$95, \$75, \$50, \$45, \$40, \$35, \$35  
**Class Number:** 503

### **\$500 Medium Pony Hunter Classic (Week 1)**

**Entry Fee:** \$50 **Fences:** 2'6"  
**Prize Money:** \$125, \$95, \$75, \$50, \$45, \$40, \$35, \$35  
**Class Number:** 504

### **\$500 Large Pony Hunter Classic (Week 1)**

**Entry Fee:** \$50 **Fences:** 3'  
**Prize Money:** \$125, \$95, \$75, \$50, \$45, \$40, \$35, \$35  
**Class Number:** 505

*If there are less than six entries in the Small, Medium and/or Large Pony Hunter Classics then the classics will be combined and run as a \$500 Pony Hunter Classic.*

### **\$500 NHJL Green Pony Hunter Classic**

**Entry Fee:** \$50 **Fences:** 2'3", 2'6", 2'9"  
**Prize Money:** \$125, \$95, \$75, \$50, \$45, \$40, \$35, \$35

**Class Number:** 506  
*Green Ponies will receive respective points from the Green Pony Hunter Classic for Pony Mania Small, Medium, Large Green Pony Awards. Green Pony Hunter Classic will be split if there are 6 in each height.*

### **\$500 NAL/WIHS Adult Amateur Hunter Classic (18-35)**

**Entry Fee:** \$50 **Fences:** 3'  
**Prize Money:** \$125, \$95, \$75, \$50, \$45, \$40, \$35, \$35  
**Class Number:** 507

### **\$500 NAL/WIHS Adult Amateur Hunter Classic (36 & Over)**

**Entry Fee:** \$50 **Fences:** 3'  
**Prize Money:** \$125, \$95, \$75, \$50, \$45, \$40, \$35, \$35  
**Class Number:** 508

### **\$500 NAL/WIHS Children's Hunter Classic (14 & Under)**

**Entry Fee:** \$50 **Fences:** 3'  
**Prize Money:** \$125, \$95, \$75, \$50, \$45, \$40, \$35, \$35  
**Class Number:** 510

### **\$500 NAL/WIHS Children's Hunter Classic (15-17)**

**Entry Fee:** \$50 **Fences:** 3'  
**Prize Money:** \$125, \$95, \$75, \$50, \$45, \$40, \$35, \$35  
**Class Number:** 511

### **\$500 Children's Hunter Pony Classic**

**Entry Fee:** \$50 **Fences:** 2' & 2'3"  
**Class Number:** 513

### **Opportunity Short/Long Stirrup Hunter Classic**

**Entry Fee:** \$35 **Fences:** 2'  
**Class Number:** 514

## Junior/Amateur Hunter 3'3" Classic

Entry Fee: \$35 Fences: 3'3"  
Class Number: 515

## Children's Hunter Classic 2'6"

Entry Fee: \$35 Fences: 2'6"  
Class Number: 516

## Adult Hunter Classic 2'6"

Entry Fee: \$35 Fences: 2'6"  
Class Number: 517

## Adequan Pre-Green Classic

Entry Fee: \$50  
Prize Money: \$125, \$95, \$75, \$50, \$45, \$40,  
\$35, \$35  
Class Number: 519

## \$2,500 USHJA National Hunter Derby

See USHJA Specs.

Entry Fee: \$200

Prize Money: \$750, \$500, \$375, \$250, \$200, \$175, \$125, \$125

Class Number: 900

## \$25,000 Pony Hunter Derby Classic (Saturday, July 21st at 8:00am)

Entry Fee: \$250

Prize Money: \$7,500, \$5,500, \$3,250, \$2,000, \$1,500, \$1,250, \$1,000, \$750, \$750, \$500, \$500, \$500

Class Number: 901

Open to all ponies with a valid USEF measurement card. This Derby/Classic will be held as a two round class. The first round will be judged numerically and the top 20 will return for a second round. The course will be made up of 12 jumps and heights will be adjusted for pony height. Small will show at 2'3", Medium will show at 2'6", and Large will show at 3'. The Derby/Classic will be run under the specifications of USEF HU 146.

## Rules & Regulations

Every class offered herein which is covered by the rules and specifications of the current USEF Rule Book will be conducted and judged in accordance therewith.

**Life, senior active and junior active members shall be eligible to participate in all classes at Regular Competitions, Eventing Competitions at the Preliminary Level or above and Combined Driving Competitions at the Advanced Level, Dressage, Reining and Vaulting Competitions and Endurance Rides. A nonmember may participate as a handler, rider, driver, owner, lessee, agent, coach or trainer at Regular Competitions, Eventing Competitions, Dressage Competitions, Reining Competitions and Combined Driving Competitions upon payment of a \$30 nonmember registration fee. Participants in the following classes are exempted from the Requirements of this rule: 1) leadline; 2) exhibitions; 3) games and races; 4) classes for 4-H members; 5) walk trot and academy classes (academy classes are classes limited to horses used regularly in a lesson program); 6) USDF introductory level tests, pas de deux and quadrille classes; 7) NRHA Endorsed**

**Reining Competitions. 8) Opportunity classes, 9) citizens of other nations who have proof, in English, of current membership in good standing of their own National Federation, 10) USEA beginner novice division; and 11) assistant handlers in Dressage Sport Horse Breeding classes.**

The Horse Show Committee reserves the right to interpret all questions and conditions in regard to or arising out of, or incident to the show without claims for damages or recourse of any kind. All questions not covered in these Rules and Regulations shall be decided by the Horse Show Management; its decision to be final.

The Horse Show Management reserves the right to limit entries in any class, section or division, to refuse, accept conditionally, or to cancel any entries, disqualify any riders or exhibitors, prohibit exhibition of entries, and cancel award prizes, without any claim for damages; to change any course, to add a dotted line, to cancel or combine any unfilled classes, or to reschedule classes, after due notice to exhibitors; to change rings or rotate judges; to change specifications in jumper

# Rules & Regulations

classes as competition warrants. Every horse entered herein for competition will be under the control of the Horse Show Management, but the Show Management will in no case be responsible for any loss or damage that may occur, and it shall be a condition of entry that each exhibitor shall hold the horse show and the officials, employees, directors, officers, sponsoring entities of the horse show and the facilities at which the horse show is held blameless for any loss or accident to his horse(s), employee(s), or equipment which may occur from sickness, fire or other cause. Each horse entered for competition will be assessed a USEF Federation Fee of \$16 (\$8 Drug and Medication/\$8 USEF) and a \$2 USHJA fee.

**While every effort has been made to avoid mistakes in this publication, the USEF, the Classic Company, Ltd. and its management assume no liability to anyone for errors. Any significant errors or changes will be disclosed to competitors whose entries are accepted upon their acceptance, and otherwise in accordance with USEF rules.**

**Entries:** The closing date for entries of the Charleston Summer Classic is **Monday, June 11, 2012**. After that date stall fees are non-refundable. A **\$25 late fee** for all hunter/jumper classes applies. Entries should be sent to the address shown on the entry blank. Checks should be made payable to Atlanta Classic. Numbers WILL NOT be issued without a SIGNED OPEN CHECK lodged with the Horse Show Secretary. The entry form for each show must include the following:

- Horse name and complete description;
- All classes or divisions entered;
- All mandatory signatures, including legal guardian in the case of a minor exhibiting;
- Organization membership numbers;
- Social Security or Federal ID number of owner.

**Stalls:** Stalls with doors are \$225 per week. If paid in full by closing date, the stall fee is \$200. In order to receive the pre-paid rate of \$200 per week, for horse or tack stalls, each weeks entry blanks must be completed in full and payment received with a filled out check or credit card with the amount clearly noted as to where the amount is to be applied, prior to the closing date. If the credit card number

is on the entry blank and is received prior to closing date, the credit card will be charged the pre-paid rate. **The closing date of Monday, June 11, 2012 will be strictly enforced for this discount.** In order to insure on time delivery we encourage the use of an overnight carrier to the following address: Classic Company, 3598 Wild Plum Road, Johns Island, SC 29455. Trainers please include a note indicating the TOTAL number of stalls required, horse and tack, and a good contact number.

## **Competition Office Hours:**

**Competition Days:** Office opens one hour before the start of the first class and closes 30 minutes following the last class.

## **Non-Competition Days:**

Mondays 9:00 a.m. - 12:00 noon

Tuesdays 9:00 a.m. - 5:00 p.m.

**Refunds:** Full refunds will be given before the closing date. After the closing date, entry fees will be refunded; however, stall fees are non-refundable.

**Check Out:** Any horse show bills not checked out at the conclusion of each show will be assessed a \$50 fee for check out. Any mistakes at check out must be resolved within 24 hours. Please review your bills carefully.

**Day Exhibitors:** Horses entered but not stabled at the horse show must use the designated area for day exhibitors. \$40 grounds fee will be assessed.

**Service Fee:** All horses, showing or non-showing, will be charged a \$35 fee. This fee allows the horse UNLIMITED add/scratches from classes, access to schooling areas and rings at designated times and defers all charges for parking passes.

**Splitting of Tack Stalls:** The Horse Show Office will be happy to split the tack stalls per the Trainers instructions among his/her customers up to each Friday at 11:00 am. At that point, the total amount will be billed to the trainer's barn account.

**Schooling:** Schooling in the show rings without permission is prohibited at all times. This includes riding, exercising and lunging. A \$100 fine will be assessed for anyone caught in the rings before or after the show without permission plus elimination from classes may be evoked.

# Rules & Regulations

**Lunging:** All lunging will be restricted to designated areas. Lunging will not be permitted in ANY ring areas at any time.

**Feed & Bedding:** Hay, grain, and bedding may be purchased on the grounds. For same day delivery, feed orders must be received prior to 12:00 noon. For feed and bedding reservations prior to arrival, please call Classic Company at 843-768-5503. If there is any question.

**Farrier:** No farrier other than the official competition farrier will be permitted to shoe on the grounds without express permission of the management. Exhibitors wishing to use another farrier must request a permit for that farrier at the Horse Show Office.

**Non-Negotiable Checks:** Checks returned by the bank for any reason will be assessed a penalty of \$50 or 15% of the check amount, whichever is greater. Upon notification of a returned check, accounts will be given three (3) days to make full payment, including the penalty, which must be paid in certified funds, cashier's check or money order. Overnight mail service is advised in order to avoid notification of the sanctioning organizations for disciplinary action.

**Poling and Offsets:** Manual poling and use of bamboo offsets are prohibited for all horses competing in the Charleston Summer Classic. Any rider, trainer, groom, or any other person who is in violation of the rules set forth above will be fined \$500 for each incident and may be suspended from further competition for the duration of the scheduled competition starting from the time of the incident. Any horse upon which a violation of the manual poling and/or use of bamboo offsets rule is perpetrated will be suspended from competition for the duration of the scheduled competition. All entry fees for the classes entered during the suspended period of the horse in question will be forfeited.

## **Formal Attire**

**Hunters:** Scarlet, black or dark blue coat; white shirt with white stock, tie, or choker; white, buff, or canary breeches; hunt cap, derby or hunting silk hat. Juniors must wear protective headgear in accordance with USEF rules. NO EXCEPTIONS.

**Equitation:** Black, dark blue, dark green, or dark gray coat; white shirt with white

stock, tie or choker, white, beige or canary breeches. Juniors must wear protective headgear in accordance with USEF rules. NO EXCEPTIONS.

**Motorized Vehicles/Golf Carts:** Under South Carolina State Laws and USEF rules, unlicensed drivers are not permitted to operate any motorized vehicles — ATVs, motorcycles, golf carts, etc., on the show grounds. Failure to abide by these regulations will subject the exhibitor to suspension from the horse show. Reference USEF GR 301.

**Motor Homes:** At the Charleston Summer Classics motor homes and camper sites are available but very limited this year. **To ensure a camper space please complete the camper reservation form and return with payment (check or credit card) before arrival. \$250 weekly.** (Includes septic or one pump out per week.) Campers that arrive without reservations will pay a \$50.00 late fee.

**Parking:** Fire regulations prohibit all vehicles, including trailers, vans and passenger vehicles from being parked in the stable areas. Vans and trailers will be allowed in the stable area only to load or off-load. **PARKING AREAS WILL BE DESIGNATED AND VIOLATORS WILL BE TOWED AWAY AT OWNER'S EXPENSE.**

**Protective Headgear:** All exhibitors are required to wear properly fitting protective headgear when mounted on the show grounds. Additionally, all juniors must wear properly fitting protective headgear with the harness secured and properly fitted while riding in the designated schooling and exercise areas, the show ring and while jumping anywhere on the show grounds. All riders must wear ASTM/SEI approved helmets while jumping on competition grounds and in hunter, hunter seat equitation and jumper classes where jumping is required. It is the responsibility of the rider, the parent/guardian or trainer of the junior exhibitor to confirm headgear worn complies with appropriate safety standards, is properly fitted and in good condition. Reference USEF GR 318.

**Minor Exhibitors:** Parent(s) or guardian(s) of minor exhibitors shall hold the Horse Show Management and the Facility harmless

# Rules & Regulations

for any injury to such minor. No child's entry will be accepted or number issued unless entry is signed by a parent or LEGAL guardian. The signature of unrelated persons WILL NOT be accepted.

Minors who do not have a valid driver's license which allows them to operate a motorized vehicle in the state in which they reside will not be permitted to operate a motorized vehicle of any kind including, but not limited to, golf carts, motorcycles, scooters, or farm utility vehicles on the competition grounds of recognized competitions. Minors who have a valid temporary license may operate the above described motorized vehicles as long as they are accompanied by an adult with a valid driver's license. Violations of this rule will be cause for sanctions against the parent(s), guardian(s) and/or trainer(s) who are responsible for the child committing the offense. Penalties may include exclusion of the child, parent(s), guardian(s), and/or trainer(s) from the competition grounds for the remainder of the competition and charges being filed against any of the above individuals in accordance with Rule 6. Wheelchairs and other mobility assistance devices for individuals with disabilities are exempt from this rule.

**Opportunity Classes:** Hunter/Jumper/Equitation Divisions

1. Opportunity Classes are for entry level riders.
2. May be held at USEF regular or local rated competitions.
3. All Opportunity classes and divisions must have fences 2'6" or below.
4. Any rider that has shown in a Zone pointed division, such as a children's hunter division is not eligible.
5. Any rider that has shown in a regular division (such as regular ponies) is not eligible.
6. All rules and regulations in section GR821 should be followed, except GR821.
7. No crossing over into rated divisions.

**Dogs:** All dogs must be restrained at all times while on the show grounds. Unrestrained dogs create a serious safety hazard for exhibitors and their horses. Keep dogs on a leash for their protection and to abide by the rules of the Mullet Hall. Loose dogs will not be tolerated in the show ring area. The dogs will be impounded and the owner charged \$100 that will be donated to the USET.

**Prize Money:** Prize money will only be awarded to the recipient of record on the entry blank provided there is valid Social Security number or Federal ID number and corresponding name and address. Prize money will be printed at the conclusion of the event. During multiple week events, prize money checks can be picked up in the Horse Show Office on Thursday. Prize money checks will be mailed within 30 days of the conclusion of the event. Please confirm information on entry form is correct to insure prompt and accurate delivery of prize money.

**Electrical/Fire Regulations:** All electrical installation and connections must meet all state and county codes. Aisles shall be maintained clear for a minimum of six (6) feet wide by eight (8) feet high. No obstructions or projections shall be allowed in these aisles. No Class I Flammable liquids such as gasoline are allowed inside the buildings. Cooking is not permitted within any stable area. Anyone found in violation shall be subject to dismissal from further participation in the horse show without recourse.

**Non-Showing Horses:** All non-showing horses must complete an entry blank and be assigned a back number. All non-showing horses will pay **\$100 per week**.

**Night Watch:** All horses occupying a stall, whether showing or not, will be required to pay a show night time security fee of \$15 per horse. This fee is not an option. Horses will be checked six times per night each night of the show week. Night time security is provided by Equine Night Security.

**Ticketed Warm-Up:** Tickets may be purchased in the Horse Show Office and are good for one round of eight jumps.

**Liability:** The Classic Company, Ltd., Mullet Hall, their officials, and employees will not be responsible for any accident or loss which may occur to any exhibitor, spectators, guest, rider, groom, attendant, other employees, animals, or equipment at the events. All owners and competitors are personally responsible for damages to third persons caused by themselves, their employees, their agents, their horses, or their dogs. They are therefore strongly advised to take out third party insurance providing full coverage for participation in equestrian events, and to keep that policy up to date.

# Rules & Regulations

WARNING: Under South Carolina law, an equine activity sponsor or equine professional is not liable for an injury to or the death of a participant in an equine activity resulting from an inherent risk of equine activity, pursuant to Article 7, Chapter 9 of Title 47, Code of Laws of South Carolina, 1976.

## Address/Phone during Horse Show:

Mullet Hall Equestrian Center  
2622 Mullet Hall Road  
Johns Island, SC 29455  
843-768-5867

The horse show will sign for your package delivered by UPS, FedEx, US Post Office or other overnight carriers but does so as a courtesy. The show or facility will not accept responsibility for the package(s). If the package is valuable, please check with the office each day regarding possible delivery.

**Directions:** Highway 17 (Savannah Highway) Turn east on Main Road go 6.6 miles; Main Road becomes Bohicket Road remain on road another 7.3 miles; Turn left on River Road and go .08 miles; Turn right on Mullet Hall Road .05 miles.

**Footing/Ring Size:** Footing is all weather.

Hunter Ring 1: 300' x 175'

Hunter Ring 2: 275' x 175'

Hunter Ring 3: 275' x 175'

Hunter Ring 4: 300' x 175'

**Jumper Classes:** If the Jumper Classics do not have more than 8 riders, the classes could be combined, cancelled.

## ADDITIONAL TERMS AND DEFINITIONS OF THE RELEASE OF LIABILITY, ASSUMPTION OF RISK, WAIVER AND INDEMNIFICATION

In consideration for entry upon the SHOW GROUND FACILITIES of the COMPETITION, the undersigned on behalf of myself, my trainers, instructors, coaches, clients, agents, employees, grooms, invitees, representatives, assigns, executors, heirs, independent contractors (including but not limited to veterinarians, farriers, masseuse, chiropractor, therapists, braiders, shippers), and, if applicable, on behalf of my minor child or children (hereinafter collectively referred to as "I") agrees:

I agree that COMPETITION as used in this entry blank, in the prize list and in the USEF rules means Charleston Summer Classic

Horse Show, each and every class and/or event conducted and ALL ACTIVITIES that I undertake AT ANY TIME and for any purpose upon entry of the SHOW GROUND FACILITIES including any horse which is on the SHOW GROUND FACILITIES for my use, in my control or at my request. I further agree that COMPETITION includes the entire week of the horse show including the time horses and/or people are allowed to enter to set up, stable and/or conduct business whether its expressly and/or specifically related to the horse show and classes being conducted/held that week through and including the time all horses and/or people vacate the SHOW GROUND FACILITIES.

I agree that this Release of Liability includes any horse that I have asked to come onto the SHOW GROUND FACILITIES for any purpose, and/or is in my control and/or custody and regardless whether the horse is being stabled at the SHOW GROUND FACILITIES and/or competing in the COMPETITION.

I agree that "RELEASED PARTIES" means the "Competition" known as Charleston Summer Classic Horse Show, the "Horse Show Management" and/or "Competition Management" as referenced in the prize list, the Federation Licensee, Classic Company and Mullet Hall Equestrian Center and each of their officers, directors, managers, members, owners, shareholders, employees, representatives, agents, subsidiaries, volunteers, officials, affiliated and associated persons, companies and organizations, assigns and entities or organizations as may now or hereafter be constituted, that own, are related to or manage the property owned by such entities.

I agree that SHOW GROUND FACILITIES means the Mullet Hall Equestrian Center including but not limited to all improvements, structures (permanent or temporary), buildings, tents, stalls, fixtures (including but not limited to all jumps and related equipment), arenas (and the footing therein) located on the premises and/or provided by RELEASED PARTIES during the COMPETITION.

I agree that if I am not a member of the Federation that I will abide by all rules and regulations of the Federation. I agree that the Rules of the Prize List are incorporated as if set forth herein.

# Rules & Regulations

**Release and Waiver of Claims:** I hereby fully and forever release, waive and discharge the RELEASED PARTIES and each of them who are or might be liable in any way from any and all claims, demands, actions, causes of actions, liabilities of any kind which I may or might have against RELEASED PARTIES or any of them, arising from or by reason of any and all known and unknown, foreseen or unforeseen bodily and personal injuries, damage to property, injury to horse and any consequences thereof, which I may sustain due to the ordinary negligence of RELEASED PARTIES; I further agree that except for the gross negligence or willful misconduct of the RELEASED PARTIES, I SHALL NOT SUE or bring any legal action, claim, and/or demand against for any economic and non-economic losses due to bodily injury, death, property damage and/or injury to any horse in relation to the SHOW GROUND FACILITIES and/or the operation and conduct of the COMPETITION. I agree this RELEASE INCLUDES ALL ACTIVITIES I PARTICIPATE IN AND ALL AREAS OF THE SHOW GROUND FACILITIES as defined above. This release also includes all activities I conduct at the SHOW GROUND FACILITIES and includes all times that I am at the SHOW GROUND FACILITIES no matter what the purpose and/or activity being undertaken.

**Hold Harmless:** I hereby agree to defend, indemnify and hold harmless RELEASED PARTIES from and against any and all claims, liabilities, loss, damages, demands, actions, causes of action, including attorneys' fees, cost and expenses of any kind, which may be made against them, or any of them, which arise out of the active or passive negligence of RELEASED PARTIES while either I or any horse at my request or in my control is/was on the SHOW GROUND FACILITIES and/or participating in the COMPETITION. I agree to defend RELEASED PARTIES, at my expense, regardless if RELEASED PARTIES are negligent or not.

**Assumption of Risk:** I hereby acknowledge and assume the risk that equestrian activity, including jumping, is very dangerous and involves the risk of serious injury and/or death and/or property damage. I expressly acknowledge that injuries may be compounded or increased by negligent maintenance of the SHOW GROUND FACILITIES, faulty or improperly secured equipment, improper supervision or compliance with Federation rules and regulations. Acts of God and negligent rescue operations or procedures of RELEASED PARTIES and negligent handling of horses and independent operations by trainers, riders and/or boarders who use the SHOW GROUND FACILITIES or others who are not affiliated with RELEASED PARTIES. I acknowledge that horses can be injured while being ridden, groomed, stabled, walked and/or exercised and I expressly assume the risk of injury to any horse under my control and/or custody or on the SHOW GROUND FACILITIES at my request.

This agreement shall be governed by the laws of the State of South Carolina with respect to all RELEASED PARTIES, except for the Federation as set forth on page one. I agree this Release extends to all acts of ordinary negligence of RELEASED PARTIES and is intended to be as broad and inclusive as permitted by law. If any portion of this Release and/or Entry Blank is held invalid, it is agreed that the balance shall continue in full legal force and effect. I have not relied on any oral representations or statements made that are contrary to or modify the above Release or warnings. I agree that by signing the front page of this Entry Blank that I am bound by the Release, waiver and warnings contained herein and that both sides/pages constitute one incorporated agreement. I agree I have the express authority to sign this entry blank/Release on behalf of the owner and/or rider.

## USEF Jumper Heights

0.70 m = Fences 2'3" in height	1.00 m = Fences 3'3" in height	1.35 m = Fences 4'5" in height
0.75 m = Fences 2'5" in height	1.05 m = Fences 3'5" in height	1.40 m = Fences 4'7" in height
0.80 m = Fences 2'7" in height	1.10 m = Fences 3'7" in height	1.45 m = Fences 4'9" in height
0.85 m = Fences 2'9" in height	1.15 m = Fences 3'9" in height	1.50 m = Fences 4'11" in height
0.90 m = Fences 2'11" in height	1.20 m = Fences 3'11" in height	1.55 m = Fences 5'1" in height
0.95 m = Fences 3'1" in height	1.25 m = Fences 4'1" in height	1.60 m = Fences 5'3" in height
	1.30 m = Fences 4'3" in height	

# GGT™

GERMAN GEO TEXTILE  
FOOTING



## Wishing Good Luck to all competitors



GGT Footing offers  
groomers, matting systems  
and full service installations.

[www.ggt-footing.com](http://www.ggt-footing.com)

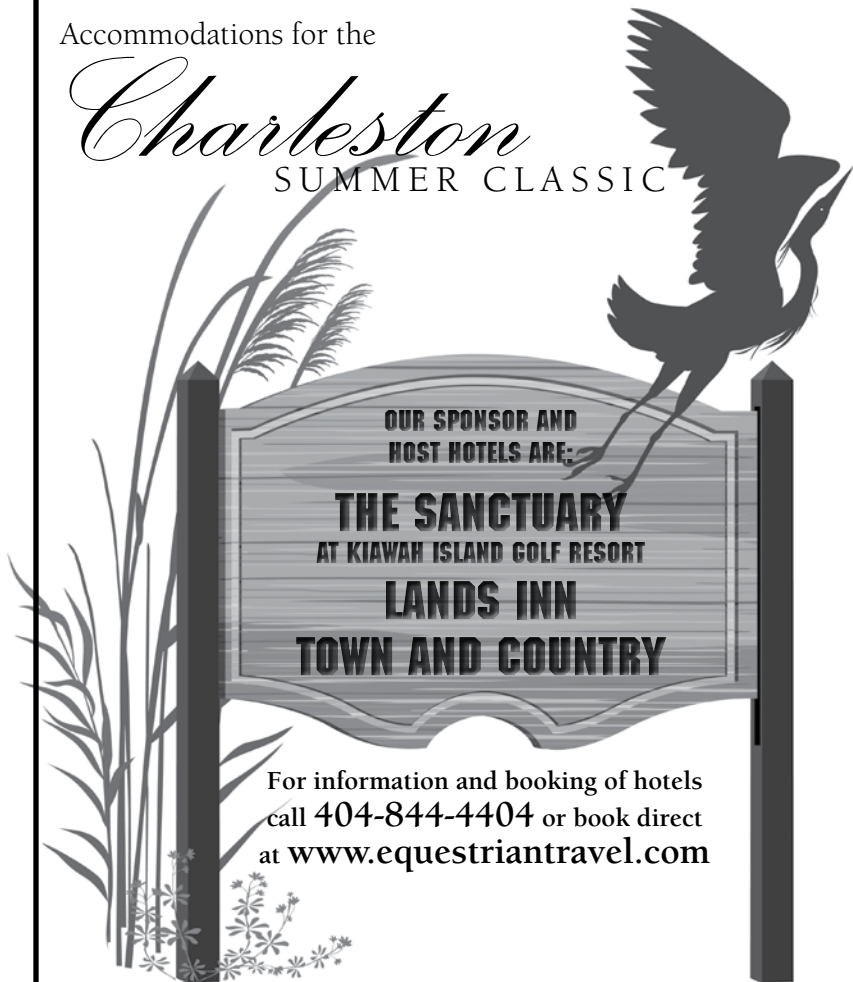


Contact: Cynthia Brewster Keating • (864) 804-0011 • [ggt@polysols.com](mailto:ggt@polysols.com)

Accommodations for the

# Charleston

SUMMER CLASSIC



OUR SPONSOR AND  
HOST HOTELS ARE:

**THE SANCTUARY**  
AT KIAWAH ISLAND GOLF RESORT  
**LANDS INN**  
**TOWN AND COUNTRY**

For information and booking of hotels  
call 404-844-4404 or book direct  
at [www.equestriantravel.com](http://www.equestriantravel.com)

Most exhibitors stay in condominiums which  
are approximately 5 miles to the entrance of  
Seabrook and Kiawah Islands

*Information for condominium rentals*

<a href="http://www.coastalgetawaysofsc.com">www.coastalgetawaysofsc.com</a>	843-789-4438 (Nancy Buck)
<a href="http://www.Beachwalker.com">www.Beachwalker.com</a>	800-334-6308 843-768-1777
<a href="http://www.aetrealestate.com">www.aetrealestate.com</a>	843-768-9844
<a href="http://www.resortquest.com">www.resortquest.com</a>	877-852-4631
<a href="http://www.sandcastleaccommodations.com">www.sandcastleaccommodations.com</a>	888-799-9993

# 2012 Zone 4 Specifications

## 2012 Zone 4 Specifications (AL, FL, GA, MS, SC, TN)

In accordance with GR 1111.4: **Contiguous states are: AR, KY, LA, MO, NC, VA.**

**Adult Amateur Hunter:** Adult Amateur Hunter classes are for amateurs 18 years of age or older showing horses and/or ponies. To be judged on performance, soundness, manners, way of going, and suitability. The Adult Amateur Hunter section may be divided by age of rider and/or height of fences. Adult Amateur Hunters are to be shown over fences at either 3' or 3'3". Riders in this section may enter any Equitation class. Riders who compete in the Amateur Owner Hunter and/or Jumper classes may show other horses that they own in the Adult Amateur Hunters. Horses and ponies exhibiting in this section may cross enter multiple sections of Adult Amateur Hunter and any classes where eligible.

**Children's Hunter:** Children's Hunter classes are for exhibitors under the age of 18 showing horses. To be judged on performance, soundness, manners, way of going, and suitability. The Children's Hunters section may be divided by age of rider and/or height of fences. The Children's Hunter section may be combined with the Children's Hunter Pony section when there are less than three entries in either section. Children's Hunters are to be shown over fences at either 3' or 3'3". Riders in this section may enter any Equitation class, but may not cross-enter into any Junior Hunter or Junior Jumper class at the same show. Horses and ponies exhibiting in this section may cross enter multiple sections of Children's Hunter and any classes where eligible.

**Children's Hunter Pony:** Children's Hunter Pony classes are for exhibitors under the age of 18 showing ponies. To be judged on performance, soundness, manners, way of going, and suitability. Suitability (size) of pony to rider is of particular importance. The Small/Medium Children's Hunter Ponies are to show over fences at 2' and Large Children's

Hunter Ponies are to show over fences at 2'6". The section may be divided at managements' discretion. The Children's Hunter section may be combined with the Children's Hunter Pony section when there are less than three entries in either section. Rider age restrictions as found in "Regular Pony" sections do not apply. Riders may show only one pony in either the 2' or the 2'6" height of the Children's Hunter Pony section when also competing in the "Regular" Small, Medium or Large Pony and/or Green Pony Hunter sections. Riders cannot cross enter into any class where fences exceed 3'3". Exception: Riders may show in Pony Jumpers. Ponies exhibiting in Children's Hunter Pony may cross enter into any class where otherwise eligible **but the rider may not show the same pony in the regular pony section.**

**Children's/Adult Amateur Jumper:** Open to horses and ponies. The rider is not eligible to compete in any jumper class above 1.15m (3'9") that offer prize money at the same show. Once a rider has competed in jumper classes over 1.15m (3'9") that offers prize money, the same rider cannot show in a Children's/Adult Amateur Jumper class or classic offering \$500 or more for 30 days. Fences at 1.10m or 3'6" to 1.15m (3'9").

**Low Children's/Adult Amateur Jumper:** Open to horses and ponies. Riders in Low Children's/Adult Amateur Jumper may not cross enter into any classes held above 1.15m (3'9") at the same show. Horse/rider combinations may cross enter into the Children's/Adult Amateur Jumpers at the same show, but not on the same day as showing in the Low Children's/Adult Amateur Jumpers. Horse/rider combinations may enter only one classic, if both Low and High are offered. Fence height 1.00m (3'3").

*While every effort has been made to avoid mistakes in this publication, the Classic Company, Ltd. and its management assume no liability to anyone for errors. Any significant errors or changes will be disclosed to competitors whose entries are accepted, upon their acceptance, and in accordance with USEF rules.*

## Charleston Summer Classic

### NO PHONE RESERVATIONS

Each camper must have a reservation form sent to the office and be pre-paid either by credit card or check in order to secure a camper spot. Campers without reservations could be parked off the grounds and/or without power and water.

Each reservation will be assigned a camper pass and can be picked up at the horse show office. This pass must be displayed in your camper at all times.

Name of Owner: \_\_\_\_\_

Owner's Phone #: \_\_\_\_\_

Credit Card: \_\_\_\_\_ - \_\_\_\_\_ - \_\_\_\_\_ - \_\_\_\_\_

Exp. Date: \_\_\_\_/\_\_\_\_/\_\_\_\_ CID and Card Security #: \_\_\_\_\_

Billing Address (if using credit card): \_\_\_\_\_

City/State: \_\_\_\_\_ Zipcode: \_\_\_\_\_

Arrival Date: \_\_\_\_/\_\_\_\_/\_\_\_\_ Manufacturer: \_\_\_\_\_

Trainer: \_\_\_\_\_

Trainer's Address: \_\_\_\_\_

Email: \_\_\_\_\_

Check:  Charleston Summer Classic I     Charleston Summer Classic II

Costs: \$250 per week

Length of RV: \_\_\_\_\_ feet    Check One\*:  30 amps     50 amps

*\*There are limited numbers of 50 amp plugs. We will try to provide the power requested but all campers should be prepared if the spot assigned does not have requested power.*

### Return form to:

Classic Company, Ltd  
Post Office Box 1311  
Johns Island, SC 29457

Fax: 843-300-1018